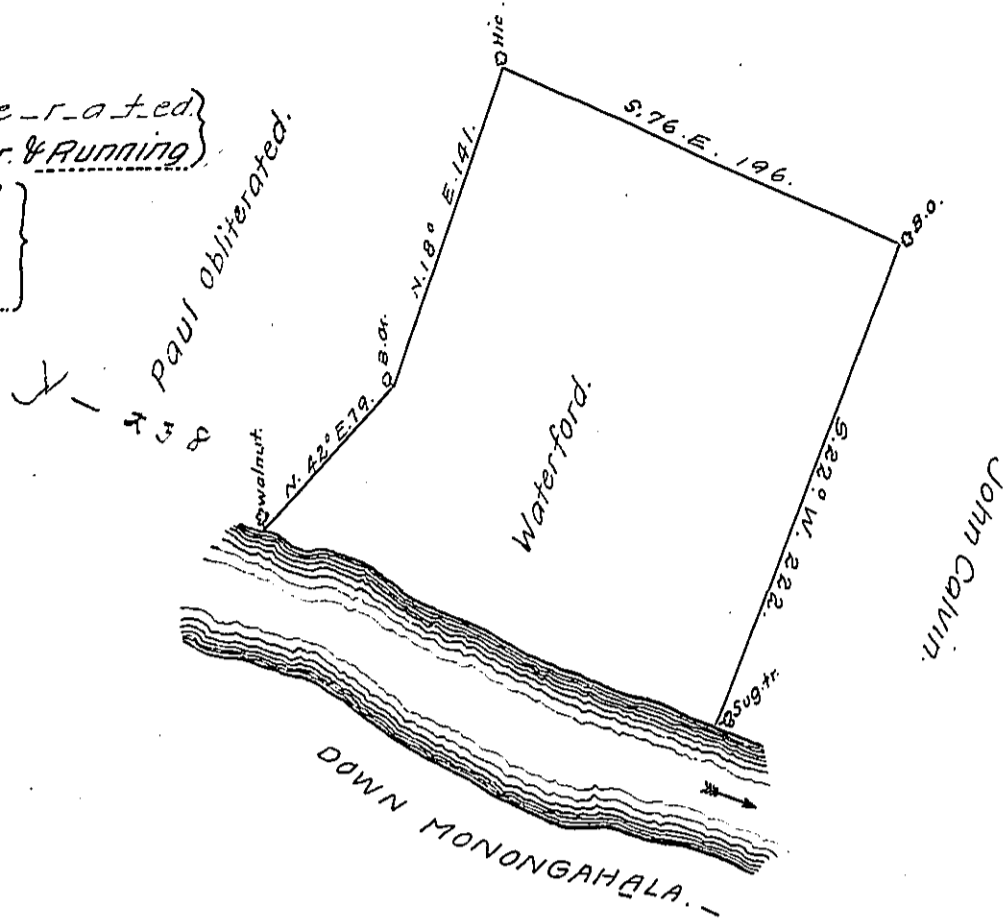


O_b_l_i_t_e_r_a_t_e_d
 beg^d at a sug. tr. & Running
 N. 78° W. 127 f.
 N. 67 W. 86 f.
 to a Walnut.



In pursuance of an order No 3771 dated 26th August, 1769 the above is a draught of a tract of land call'd: Waterford, situated on the West side Monongahla, containing 252 " 1 " 23 acres with the usual allowance of 6 fC. for Roads, highways, &c. Survey'd for Philip Riely, 3^d November, 1769.

by James Hendricks. -

To John Lukens, Esq^r,
 Surveyor General.

IN TESTIMONY that the above is a copy of the original remaining on file in the Department of Internal Affairs of Pennsylvania, made conformably to an Act of Assembly approved the 16th day of February, 1833, I have hereunto set my Hand and caused the Seal of said Department to be affixed at Harrisburg, this second day of February, 1911.

Henry Houck,
 Secretary of Internal Affairs.